

Version 1.6.1 – Updated 2021/01/03

For questions related to the specification, please contact the Client Design Team by email: uchredev@dramsoc.org.

For any queries regarding interpretation of these CADs, please contact the drafter by email: al@dramsoc.org, or if immediate response is required 07724142363.

There may be minor discrepancies between the concept renders and the CAD drawings. The CAD should generally be considered the source of truth. If unsure please ask. Whilst these CAD are intended to closely follow the nuances of the building fabric, care should be taken when deriving dimensions below 0.5m from these CADs as simplifications to reality may have been made during construction.

UCH Redev 202x Sheet Schedule	
Sheet Number	Sheet Title
S0	Schedule of Drawings
S1	Guiding Principles
S2	Concept Renderings of Hall
S3	Concept Renderings of Foyer
S4	Colour Scheme
A1	UCH Overview and Naming Convention
A2	Demolitions L2
A3	Steelwork
A4	New Walls, Ceilings and Floors L2
A5	New Walls and Floors L2M
A5	Detailed New Fixtures and Fittings L2
A6	Detailed New Fixtures and Fitting L2M
A7	Detailed Spline Concept
M1	New Cable Containment L2
E1	New Lighting (non emergency) L2
E2	New Lighting (picture) L2
E3	New Emergency LX and Fire L2
E4	New Lighting (non emergency) L2M
E5	New Sockets L2
E6	New Data L2

TODO:

- Add demolition drawings
- Add section drawing for foyer ceiling construction
- Add section drawing for shed/airlock construction
- Add section drawing for foyer basket runs – notably the ‘waffle’
- Add section drawings for spline construction
- Various open questions listed within each drawing.



UCH REDEV 202X
IMPERIAL COLLEGE UNION

OWNER

ICU CHUG

MARK	DATE	DESCRIPTION

PROJECT NO: UCH20AL

CAD DWG FILE: S0 SCHEDULE OF DRAWINGS.DWG

DRAWN BY: AL

CHK'D BY: -

COPYRIGHT:

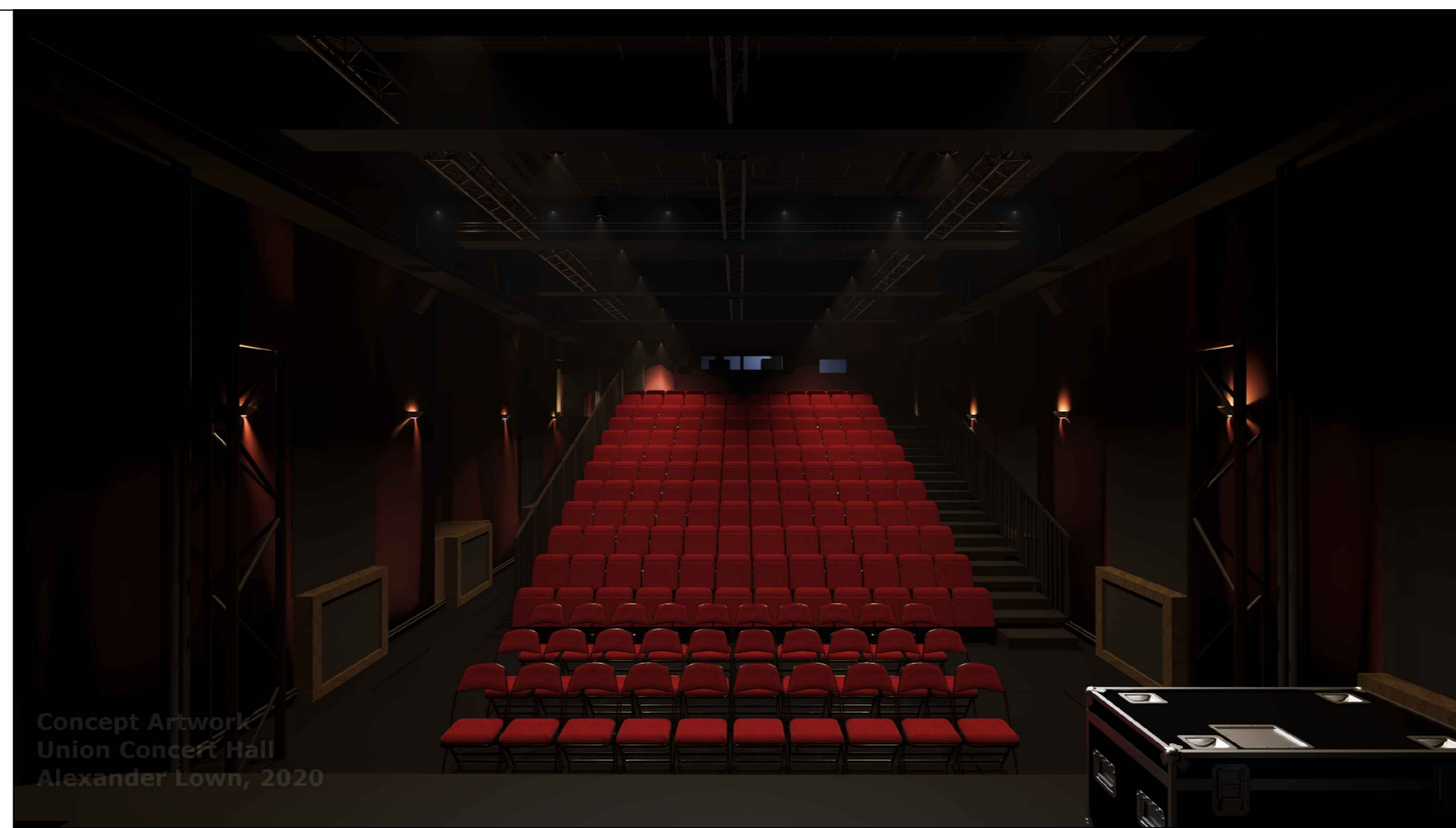
SHEET TITLE

SCHEDULE OF DRAWINGS

SHEET - S0 OF -



Concept Artwork
Union Concert Hall
Alexander Lown, 2020

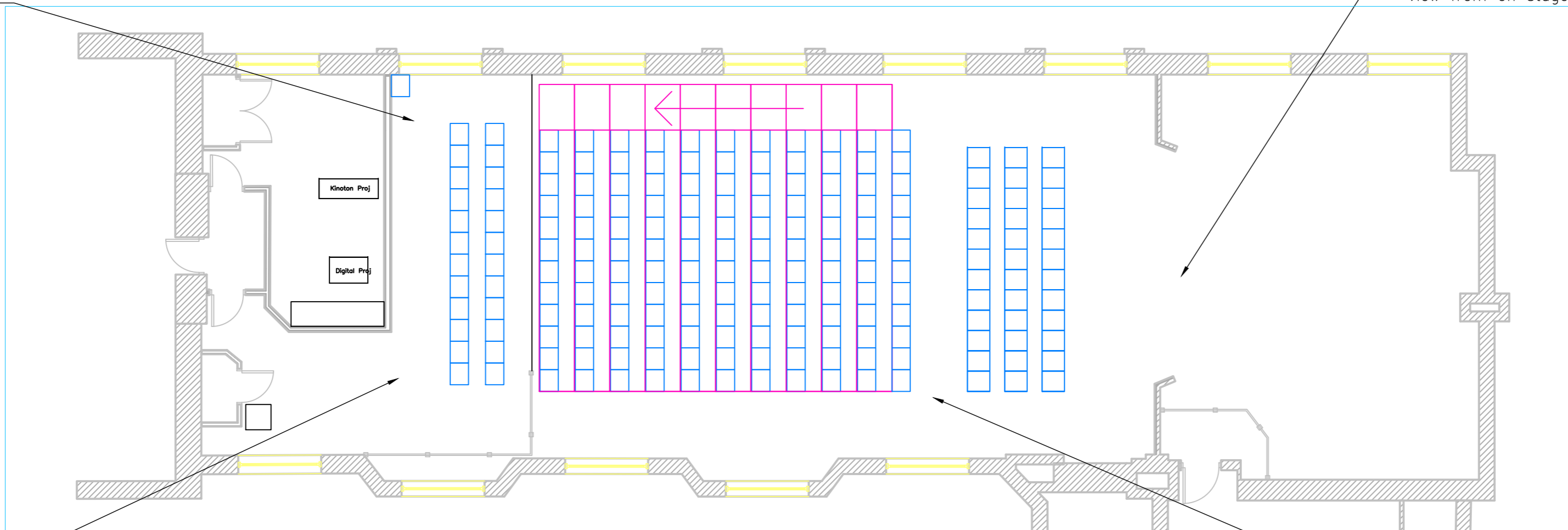


Concept Artwork
Union Concert Hall
Alexander Lown, 2020

DRAM SOC

View from rear of rake

View from on stage



View from grand circle

View from front of rake

UCH REDEV 202X
IMPERIAL COLLEGE UNION

OWNER

ICU CHUG

MARK	DATE	DESCRIPTION

PROJECT NO: UCH20AL
CAD DWG FILE: S2 CONCEPT RENDERINGS OF HALL.DWG
DRAWN BY: AL
CHK'D BY: JS, BS, RS, SL
COPYRIGHT:

SHEET TITLE
CONCEPT RENDERINGS OF
HALL



Concept Artwork
Union Concert Hall
Alexander Lown, 2020

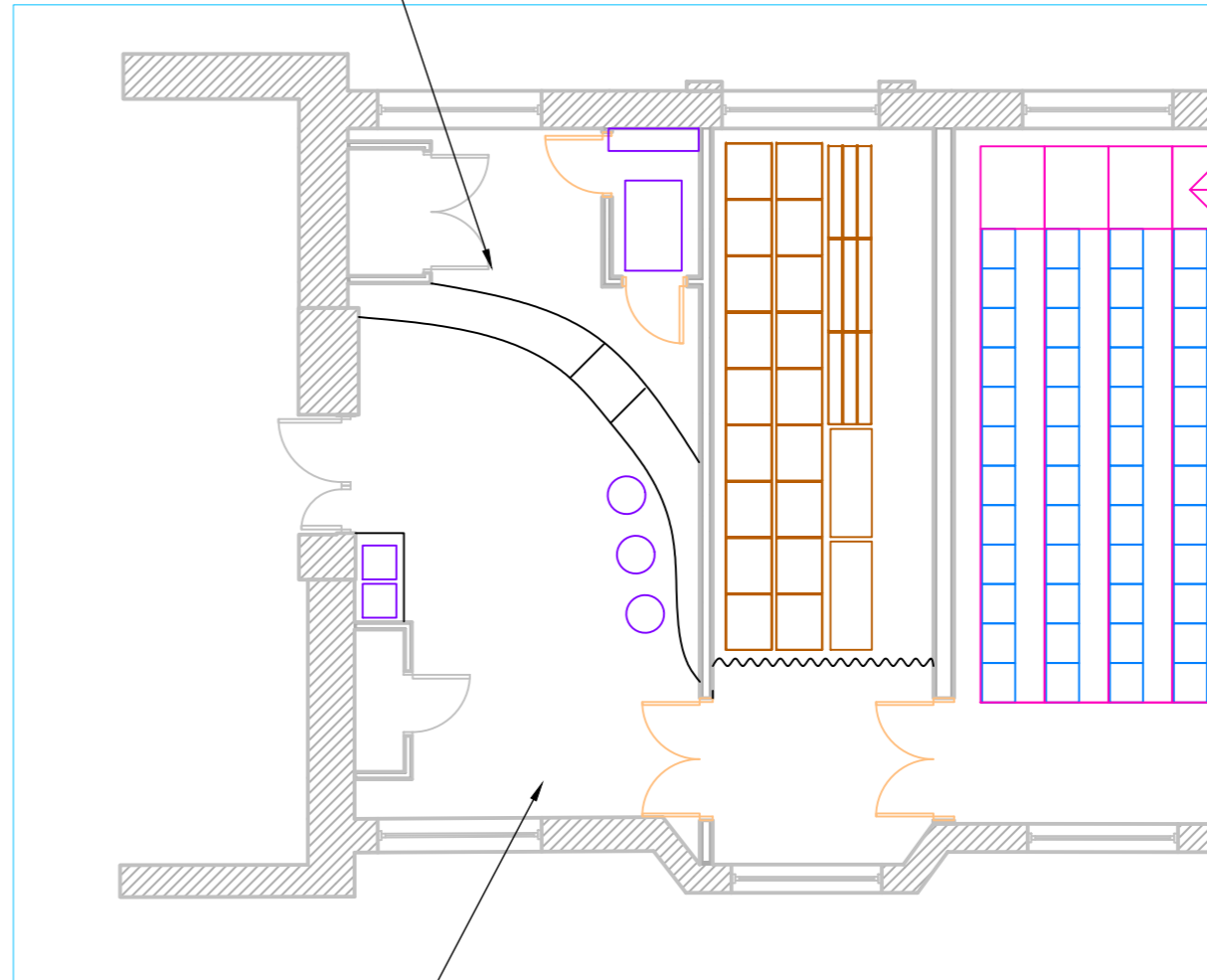


Concept Artwork
Union Concert Hall
Alexander Lown, 2020

SHEET S2 OF



View from behind counter



View from by south window

DRAM SOC

UCH REDEV 202X
IMPERIAL COLLEGE UNION

OWNER

ICU CHUG

MARK	DATE	DESCRIPTION

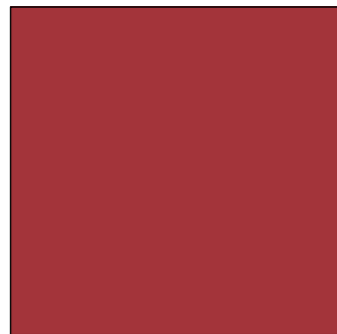
PROJECT NO: UCH20AL
 CAD DWG FILE: S3 CONCEPT RENDERINGS OF FOYER.DWG
 DRAWN BY: AL
 CHK'D BY: JS, BS, RS, SL
 COPYRIGHT:

SHEET TITLE
 CONCEPT RENDERINGS OF
 FOYER

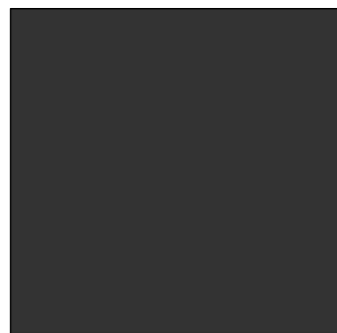
Colour Scheme



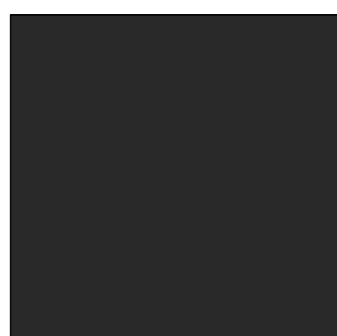
RAL 3005
 - Hall Walls
 - Spline front 'underside'



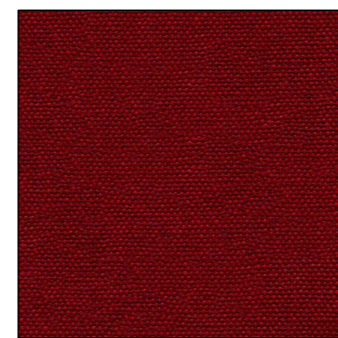
RAL 3031
 - Foyer Walls



RAL 7021
 - Radiator piping and grilles
 - Skirting
 - Riser/cupboard doors and mantles
 - Hall and foyer 'waffles'



RAL 9011
 - Hall Floor



Camira Main Line Plus Matador
 - Rake seating
 - Grand circle seating
 - Foldable seating
 - Usher seat



Rawson Eurocord Charcoal
 - Rake flooring
 - Grand circle flooring



UCH REDEV 202X
 IMPERIAL COLLEGE UNION

OWNER

ICU CHUG

MARK	DATE	DESCRIPTION
------	------	-------------

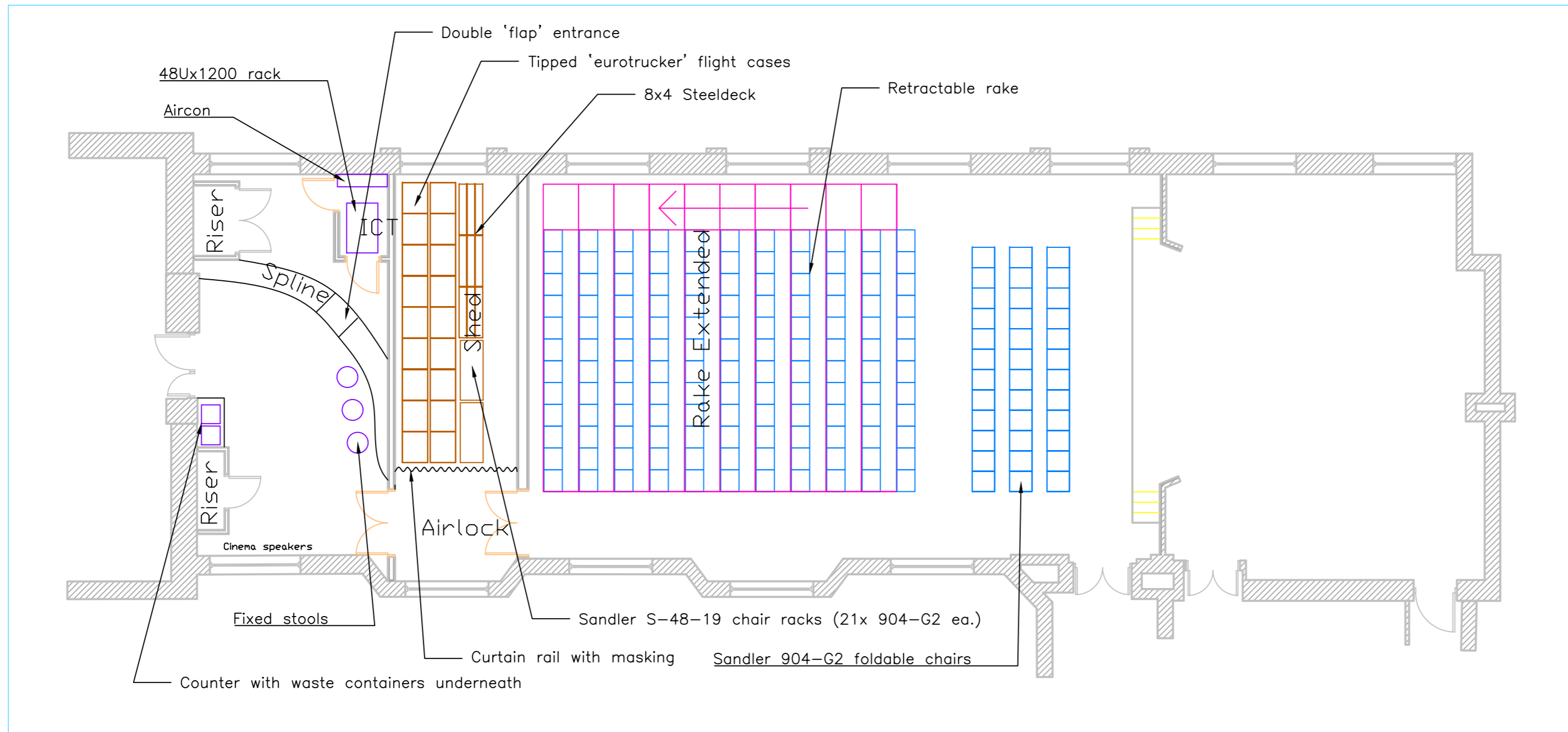
PROJECT NO: UCH20AL
 CAD DWG FILE: S4 COLOUR SCHEME.DWG
 DRAWN BY: AL
 CHK'D BY: JS, SL
 COPYRIGHT:

SHEET TITLE

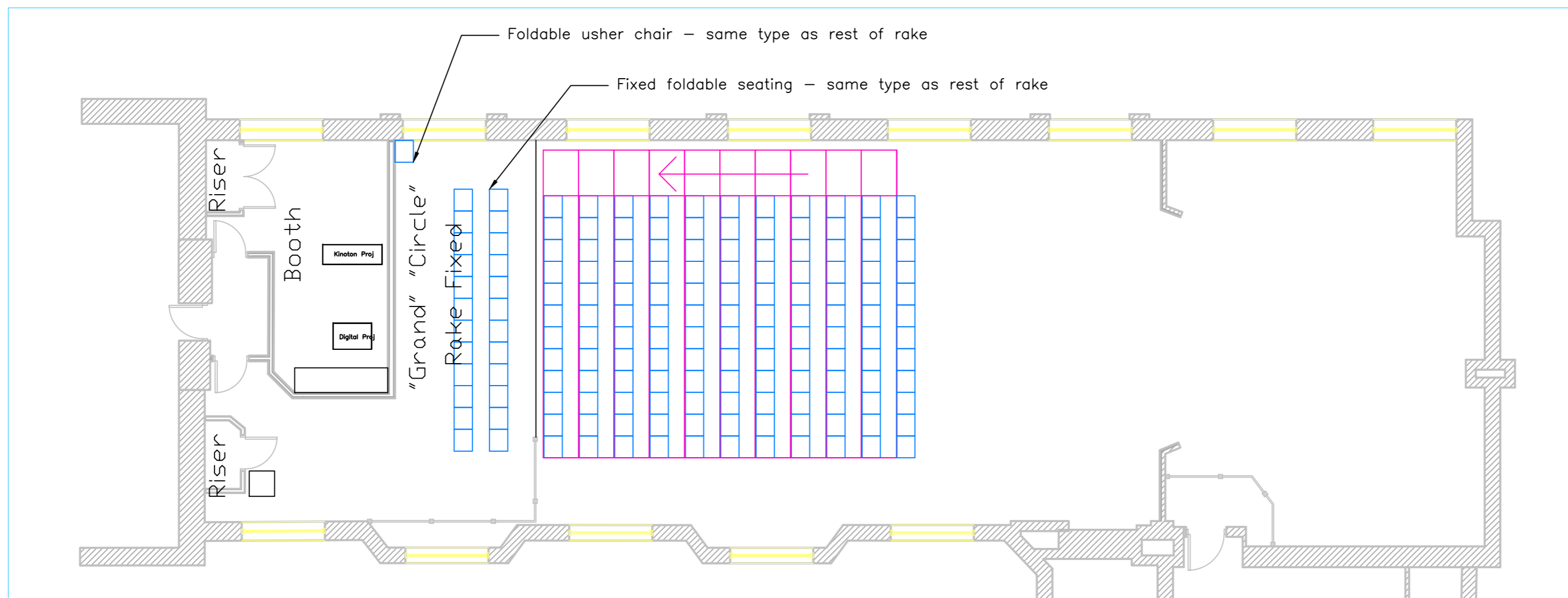
COLOUR SCHEME

Sample colours above not an exact likeness of the true colour. Refer to sample materials if unsure.

Level 2



Level 2M



UCH REDEV 202X
IMPERIAL COLLEGE UNION

OWNER

ICU CHUG

MARK	DATE	DESCRIPTION

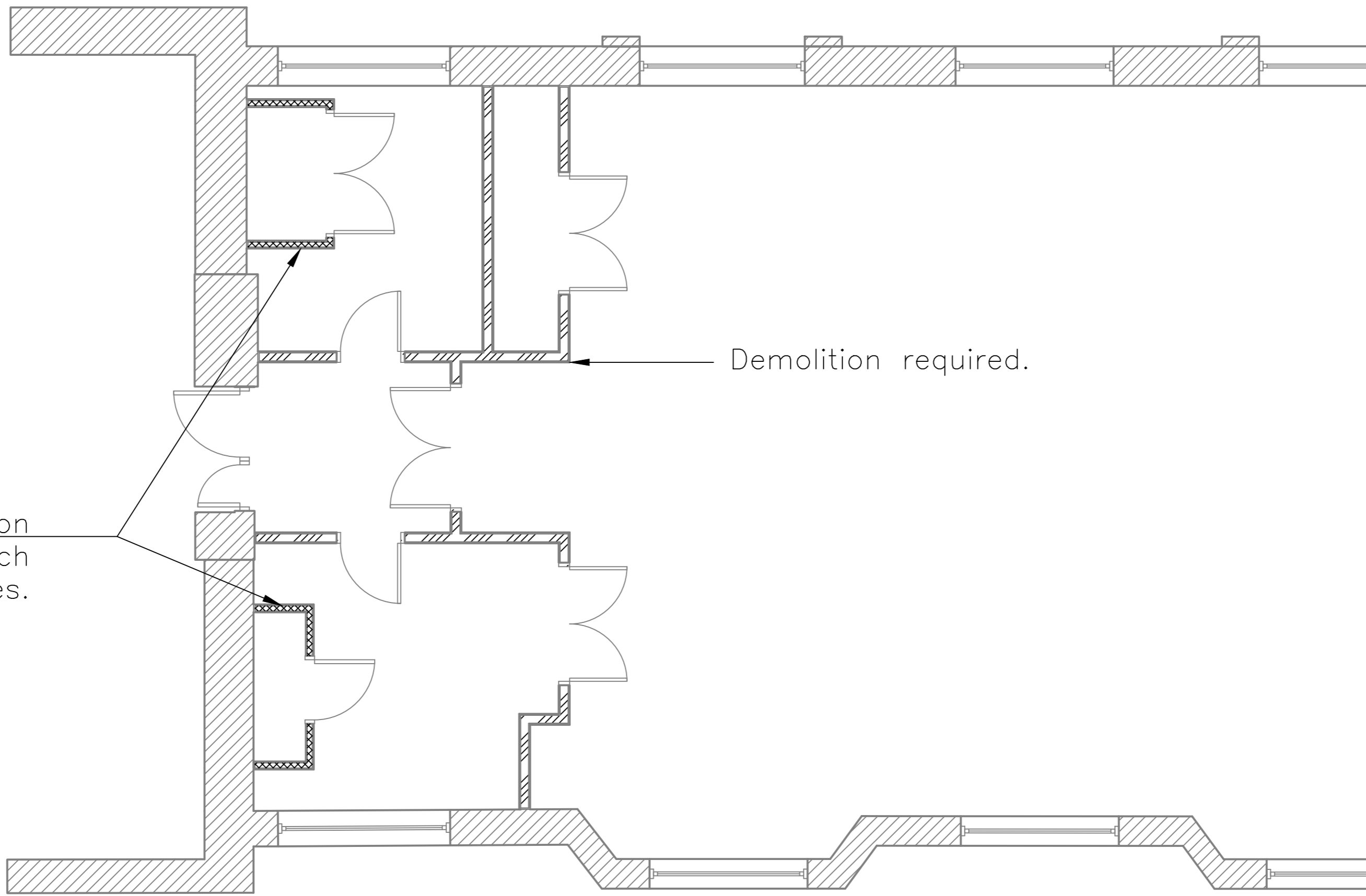
PROJECT NO: UCH20AL
 CAD DWG FILE: A1 UCH OVERVIEW AND NAMING CONVENTION.DWG
 DRAWN BY: AL
 CHK'D BY: JS, BS, RS, SL
 COPYRIGHT:

SHEET TITLE

UCH OVERVIEW AND NAMING
CONVENTION

SHEET - A1
OF -

DRAM SOC



Suggested demolition
and rebuild to match
new finishes.

Demolition required.

UCH REDEV 202X
IMPERIAL COLLEGE UNION

OWNER

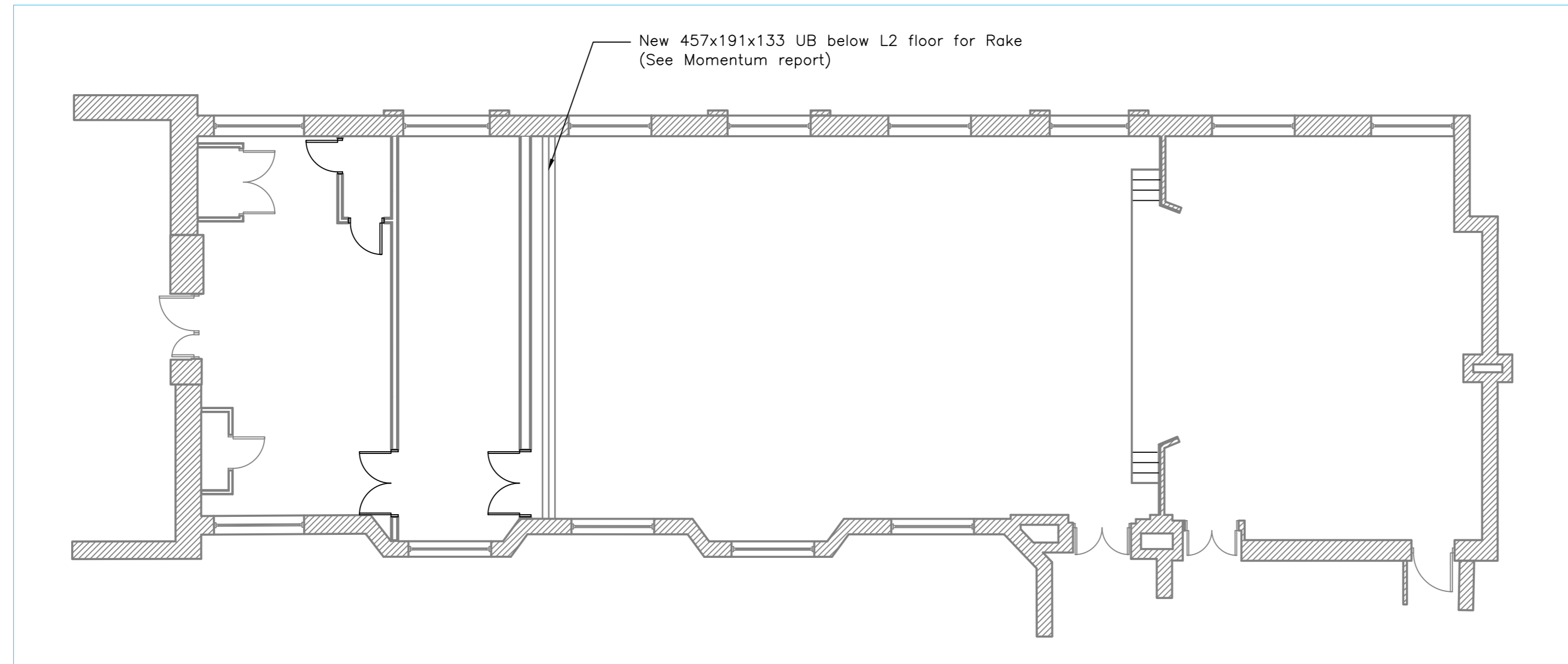
ICU CHUG

MARK	DATE	DESCRIPTION
------	------	-------------

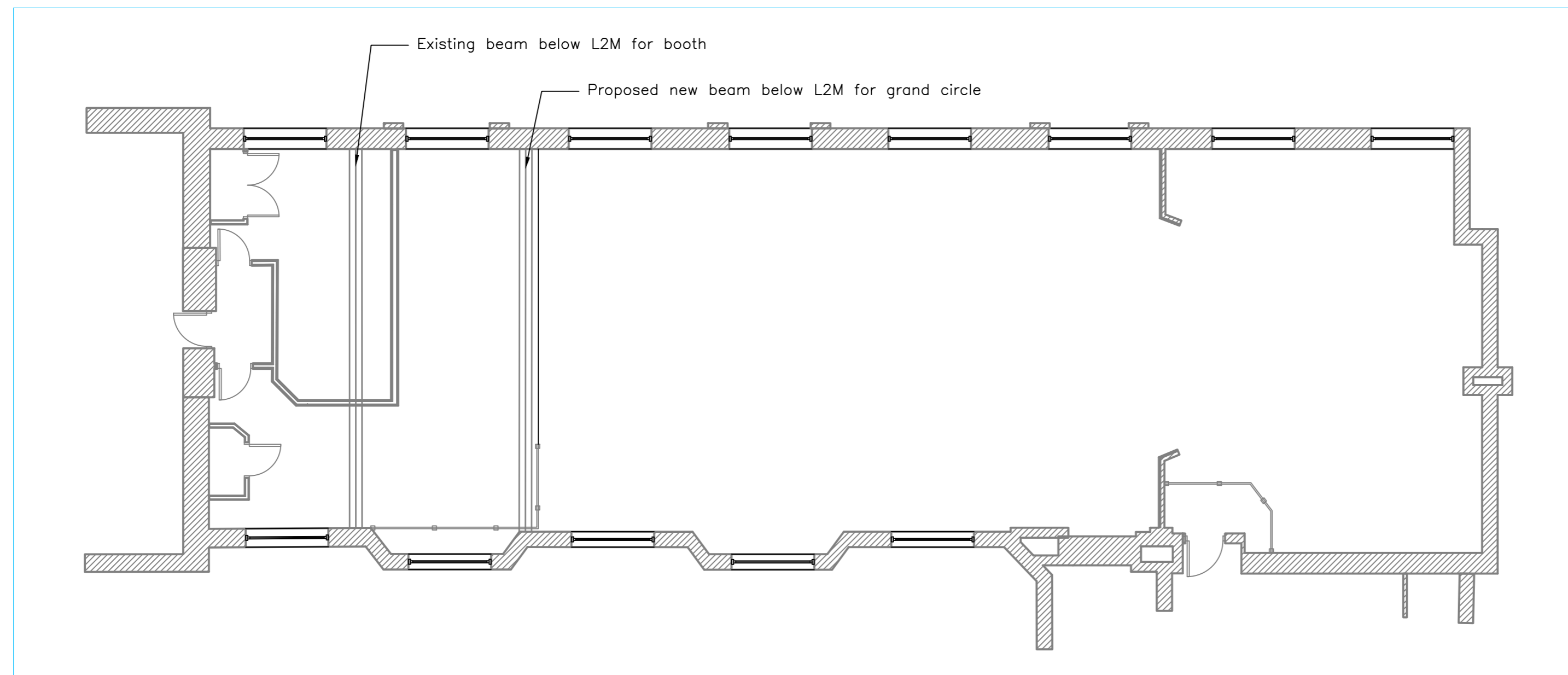
PROJECT NO:	UCH20AL
CAD DWG FILE:	A2 DEMOLITIONS L2.DWG
DRAWN BY:	AL
CHK'D BY:	JS, SL
COPYRIGHT:	

SHEET TITLE
DEMOLITIONS L2

Level 2



Level 2M



UCH REDEV 202X
IMPERIAL COLLEGE UNION

OWNER

ICU CHUG

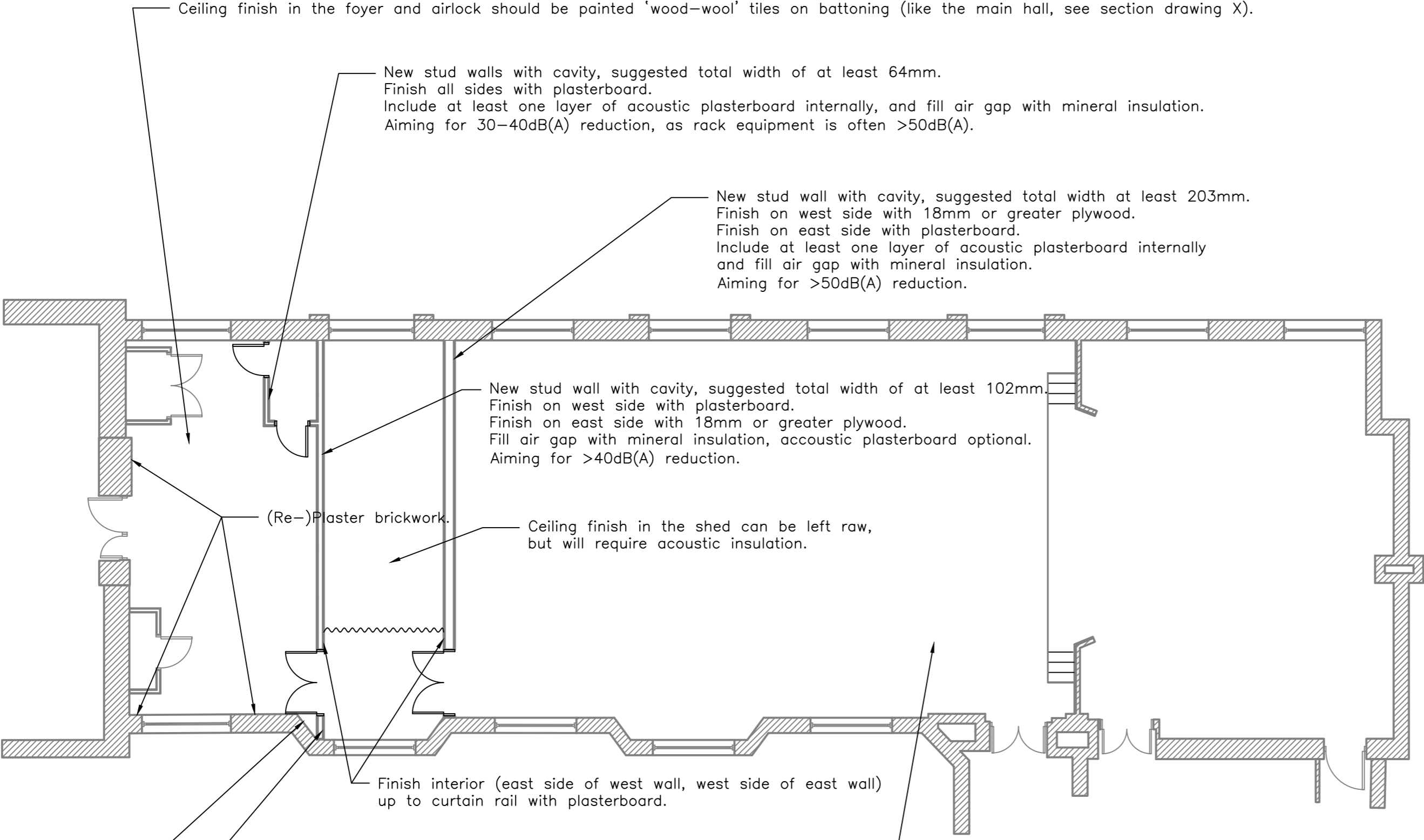
MARK	DATE	DESCRIPTION

PROJECT NO: UCH20AL
 CAD DWG FILE: A3 STEELWORK.DWG
 DRAWN BY: AL
 CHK'D BY: JS, BS, RS, SL
 COPYRIGHT:

SHEET TITLE
 STEELWORK

SHEET - OF -
 A3

All existing stud walls on Level 2 of the UCH that are NOT included in this drawing are to be demolished.
All existing furring on west wall should be stripped.



Ceiling finish in the foyer and airlock should be painted 'wood-wool' tiles on battoning (like the main hall, see section drawing X).

New stud walls with cavity, suggested total width of at least 64mm.
Finish all sides with plasterboard.
Include at least one layer of acoustic plasterboard internally, and fill air gap with mineral insulation.
Aiming for 30-40dB(A) reduction, as rack equipment is often >50dB(A).

New stud wall with cavity, suggested total width at least 203mm.
Finish on west side with 18mm or greater plywood.
Finish on east side with plasterboard.
Include at least one layer of acoustic plasterboard internally and fill air gap with mineral insulation.
Aiming for >50dB(A) reduction.

New stud wall with cavity, suggested total width of at least 102mm.
Finish on west side with plasterboard.
Finish on east side with 18mm or greater plywood.
Fill air gap with mineral insulation, acoustic plasterboard optional.
Aiming for >40dB(A) reduction.

(Re-)Plaster brickwork.

Ceiling finish in the shed can be left raw, but will require acoustic insulation.

Finish interior (east side of west wall, west side of east wall) up to curtain rail with plasterboard.

New stud wall with cavity, suggested total width of at least 102mm.
Finish both sides with plasterboard.
Fill air gap with mineral insulation, acoustic plasterboard optional.
Aiming for >40dB(A) reduction.

The exact construction between the wall and ceiling at this point will be very important to the acoustic isolation between the hall and foyer given the gap from 2M in the window bay.
(See section X).

Floor finished with 'sacrificial' plywood layer in standard sheet sizes with countersunk fittings.

Open questions: Would it be better to go for a breezeblock/cinderblock approach on the shed-to-hall wall?

UCH REDEV 202X IMPERIAL COLLEGE UNION

OWNER

ICU CHUG

MARK	DATE	DESCRIPTION

PROJECT NO: UCH20AL

CAD DWG FILE: A4 NEW WALLS, CEILINGS AND FLOORS L2.DWG

DRAWN BY: AL

CHK'D BY: JS, SL

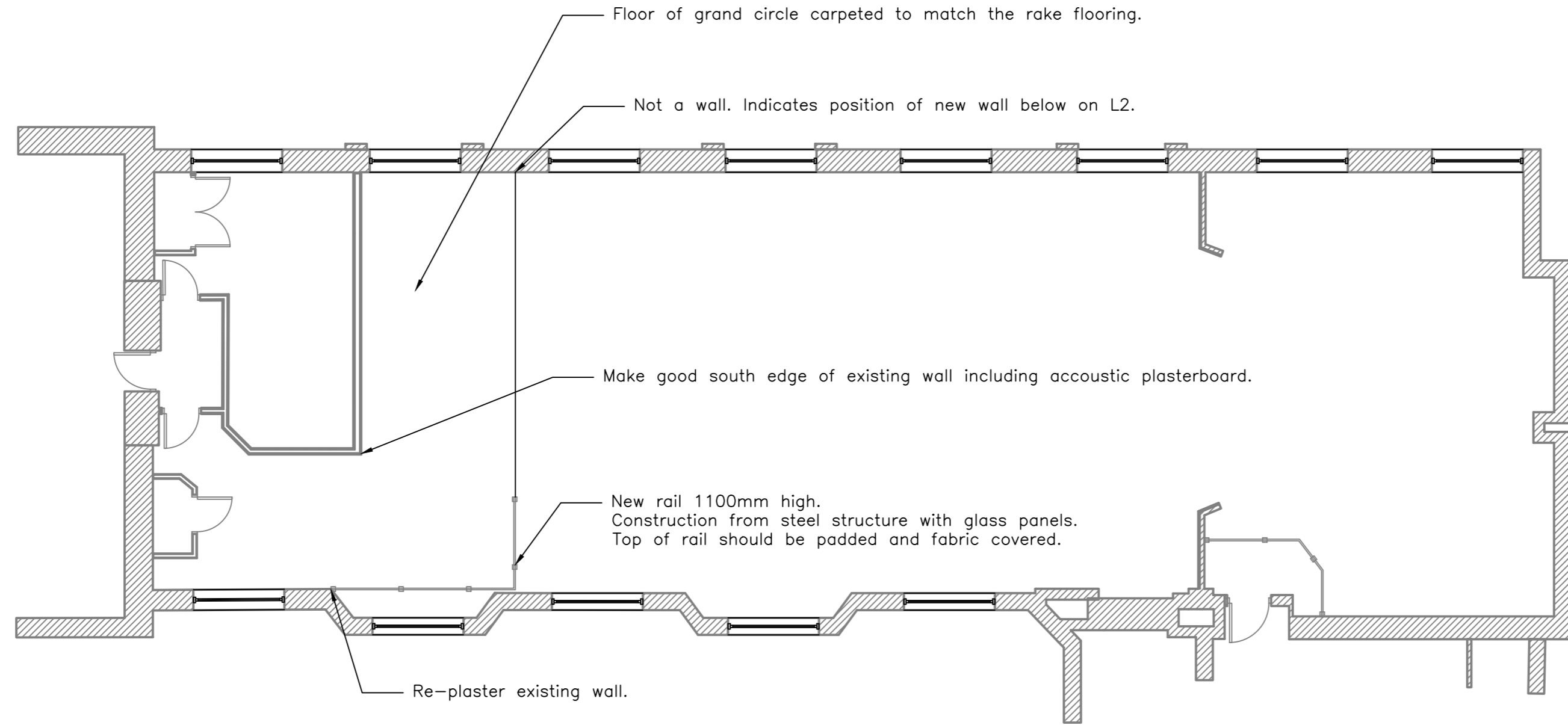
COPYRIGHT:

SHEET TITLE

NEW WALLS, CEILINGS AND FLOORS L2



All existing stud walls on Level 2M of the UCH that are NOT included in this drawing are to be demolished.
Note: This will require the removal of the dado on the gantry, and the re-running of all power and data to the cinema booth which runs through it. It will likely also necessitate the moving of the blinds control box.



UCH REDEV 202X
IMPERIAL COLLEGE UNION

OWNER

ICU CHUG

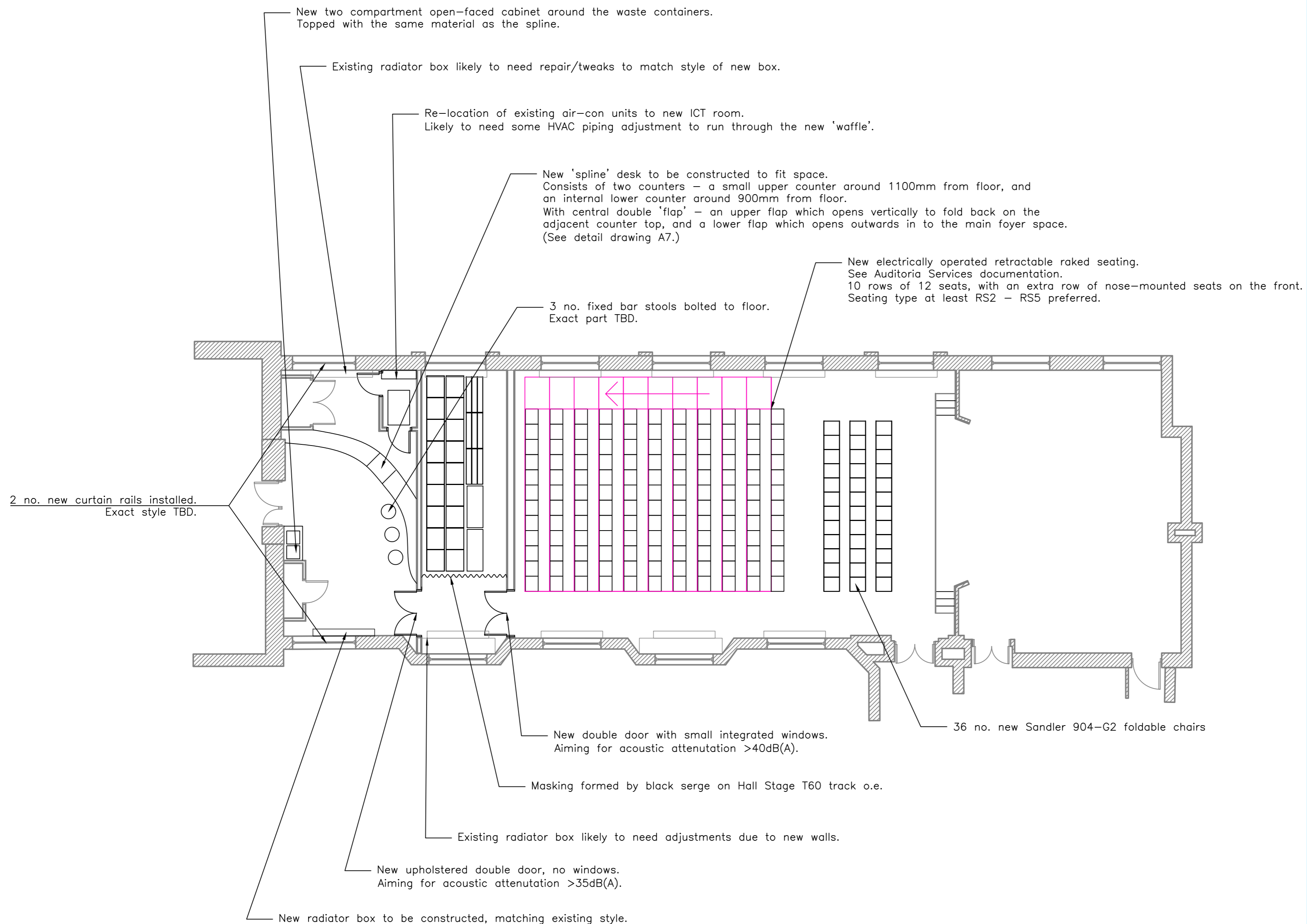
MARK	DATE	DESCRIPTION

PROJECT NO: UCH20AL
CAD DWG FILE: A5 NEW WALLS AND FLOORS L2M.DWG
DRAWN BY: AL
CHK'D BY: -
COPYRIGHT:

SHEET TITLE
NEW WALLS AND FLOORS L2M

SHEET - A5 OF -

DRAM SOC



UCH REDEV 202X
IMPERIAL COLLEGE UNION

OWNER

ICU CHUG
- - - -

MARK	DATE	DESCRIPTION
------	------	-------------

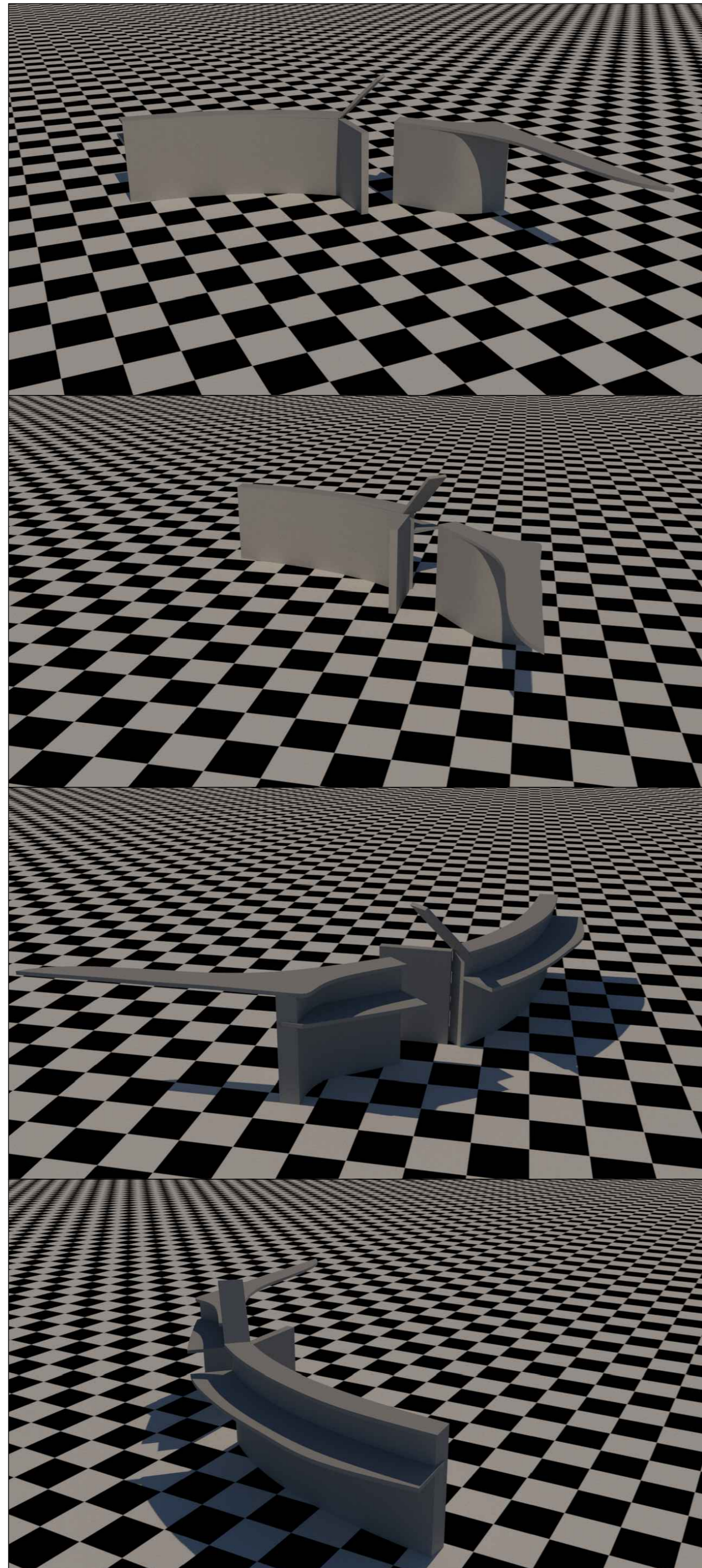
PROJECT NO: UCH20AL
CAD DWG FILE: A5 DETAILED NEW FIXTURES AND FITTINGS L2.DWG
DRAWN BY: AL
CHK'D BY: JS, SL
COPYRIGHT:

SHEET TITLE
DETAILED NEW FIXTURES
AND FITTINGS L2

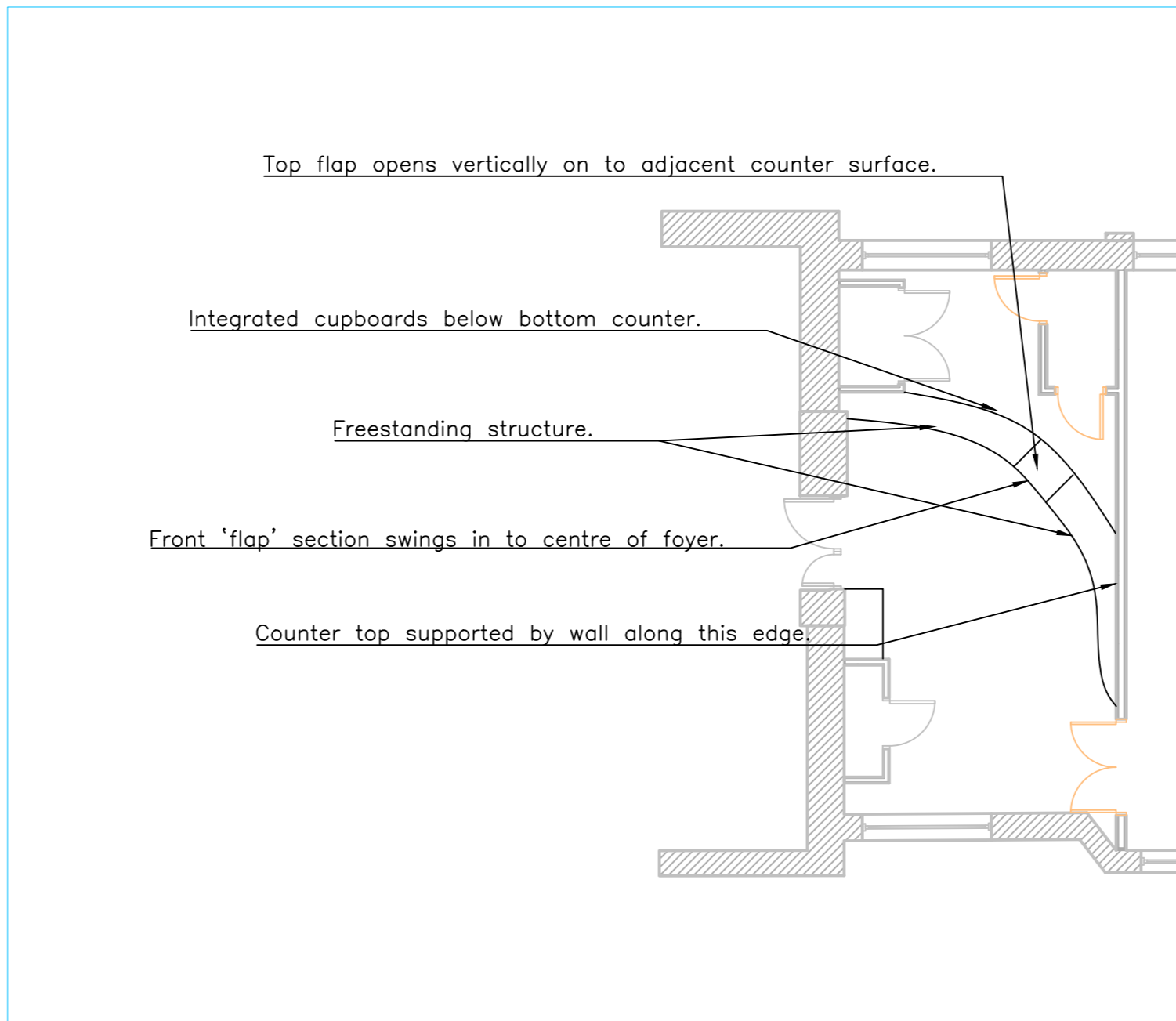
Open questions:

- Change the main 1.5 door from the central core to a single (wide) sliding door - slides northwards along interior wall? (Likely only worth including if wider discussion about access control are had.)
- Installation of small scaffold 'box' around the radiator box at the north end of the shed to protect from flight cases?
- Installation of ratchet strap hooking rails along the interior walls of the shed to secure tipped cases/steeldeck/etc. too?
- Creation of cabinet for cinema speaker storage next to foyer south riser?
- Rather than using serge to mask the shed, potentially some kind of rolling shutter? (Disadvantages: noisy, hard to repair, high risk of breakage, etc.)

DRAM SOC



- Materials:
- Hardwood for top counter
 - Hardwood/laminate for lower counter
 - Wood batton construction faced with MDF



- Open questions:
- Exact height of the two counters?
 - Depth of lower counter? - dictates the space for any cupboards
 - Number of cupboards?
 - Construction method?

UCH REDEV 202X
IMPERIAL COLLEGE UNION

OWNER

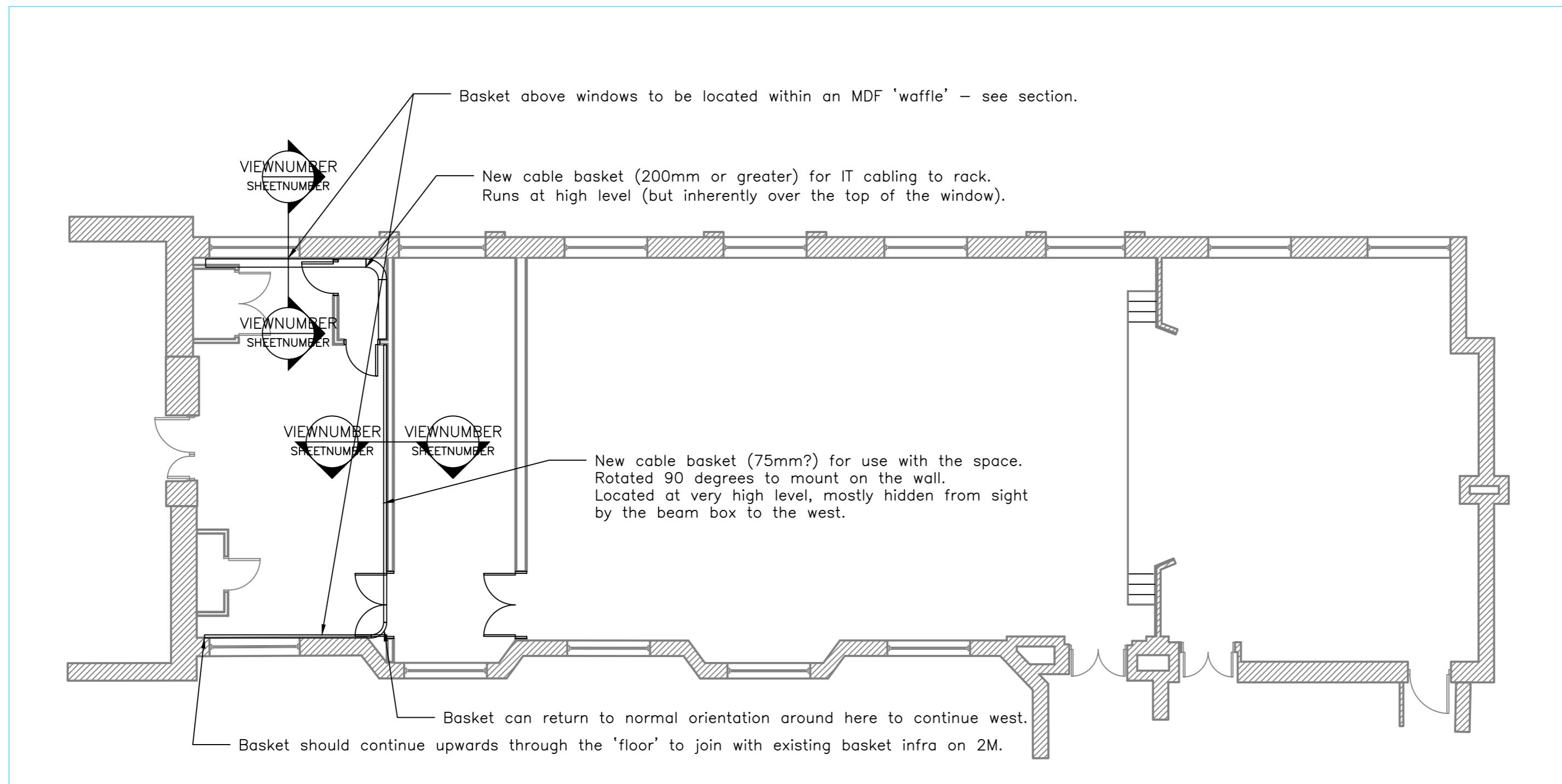
ICU CHUG

MARK	DATE	DESCRIPTION

PROJECT NO: UCH20AL
 CAD DWG FILE: A7 DETAILED SPLINE CONCEPT.DWG
 DRAWN BY: AL
 CHK'D BY: JS, SL
 COPYRIGHT:

SHEET TITLE
 DETAILED SPLINE CONCEPT

SHEET - A7 - OF -



UCH REDEV 202X
IMPERIAL COLLEGE UNION

OWNER

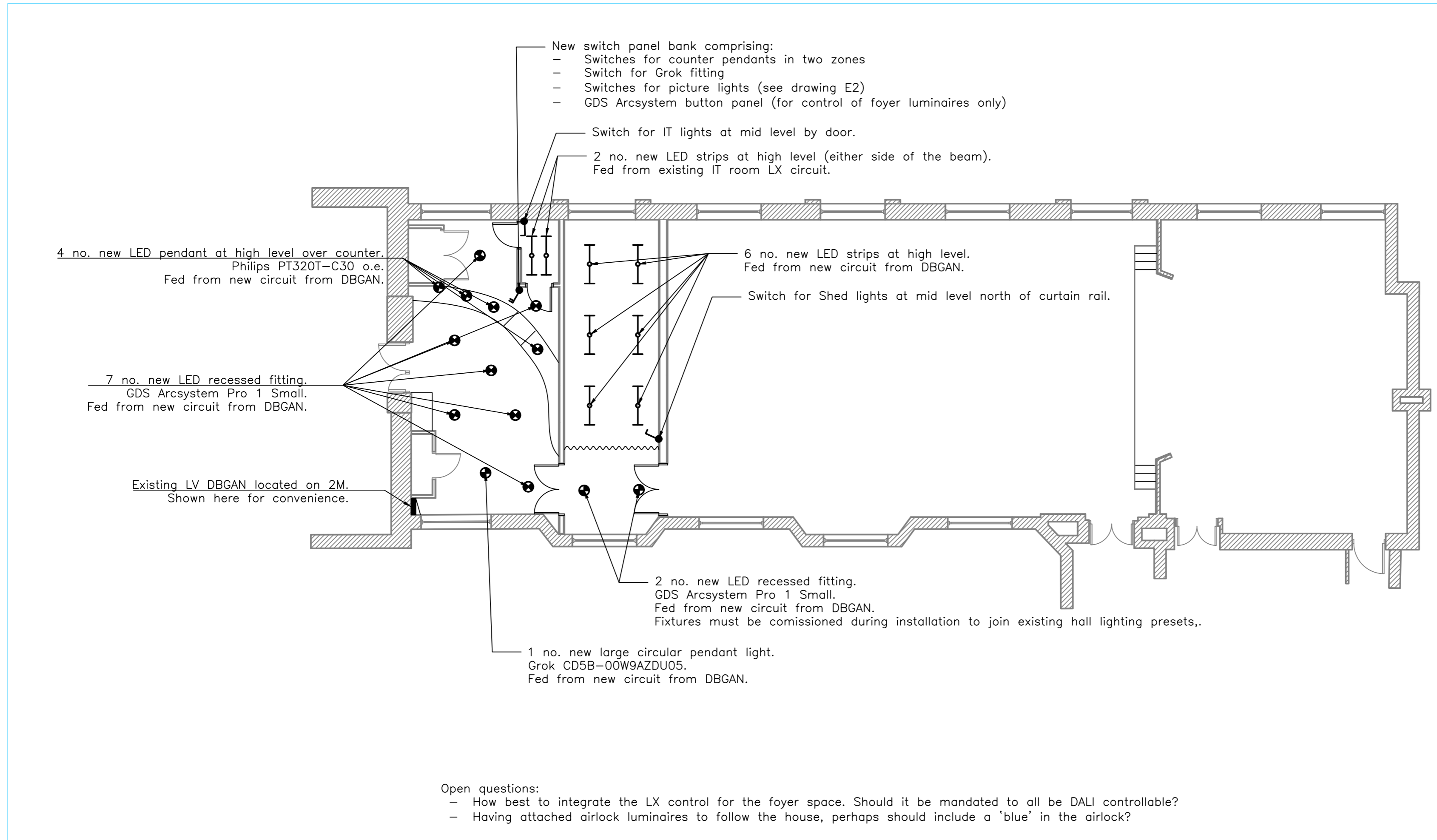
ICU CHUG

MARK	DATE	DESCRIPTION
------	------	-------------

PROJECT NO: UCH20AL
CAD DWG FILE: M1_NEW_CABLE_CONTAINMENT_L2.DWG
DRAWN BY: AL
CHK'D BY: RS, JS, SL
COPYRIGHT:

SHEET TITLE

NEW CABLE CONTAINMENT L2



UCH REDEV 202X
IMPERIAL COLLEGE UNION

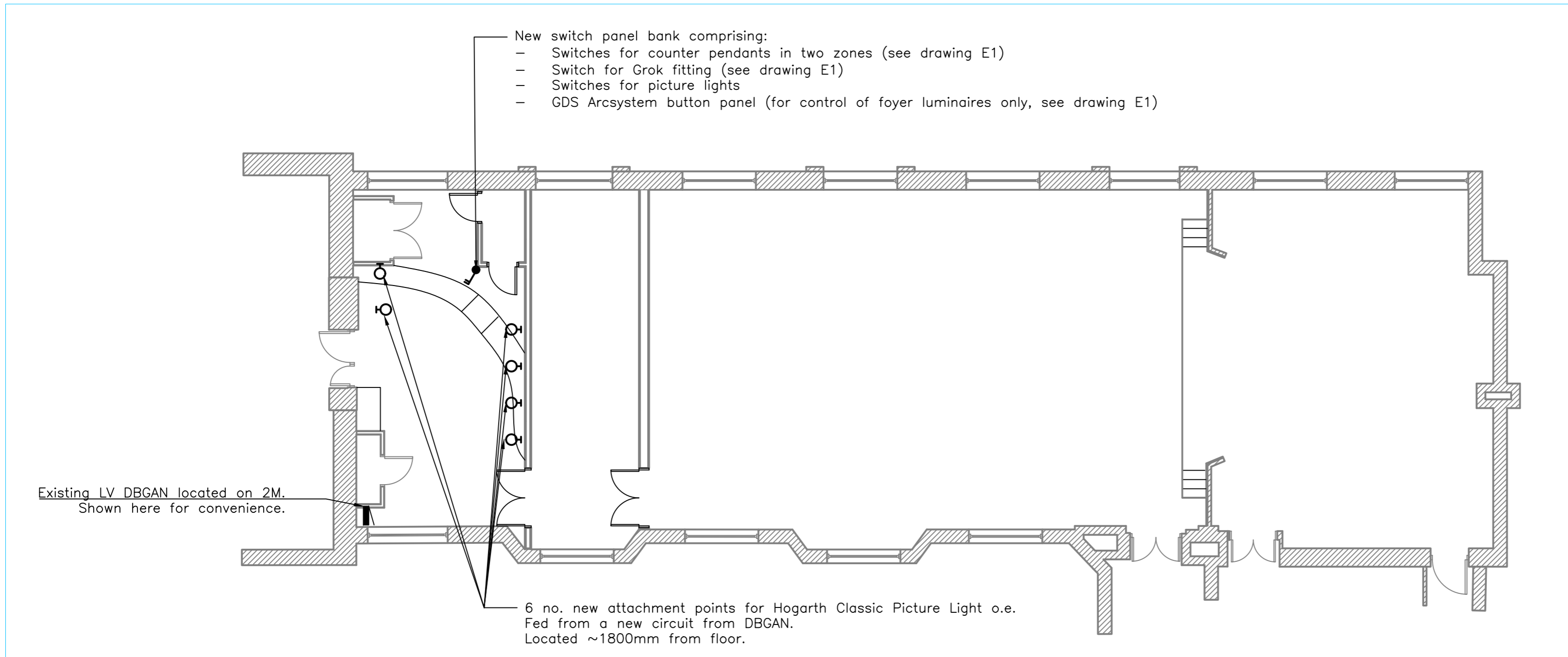
OWNER

ICU CHUG

MARK	DATE	DESCRIPTION

PROJECT NO: UCH20AL
 CAD DWG FILE: E1 NEW LIGHTING (NON EMERGENCY) L2.DWG
 DRAWN BY: AL
 CHK'D BY: JS, BS, RS, SL
 COPYRIGHT:

SHEET TITLE
NEW LIGHTING (NON EMERGENCY) L2



UCH REDEV 202X
 IMPERIAL COLLEGE UNION

OWNER

ICU CHUG

MARK	DATE	DESCRIPTION

PROJECT NO: UCH20AL

CAD DWG FILE: E2 NEW LIGHTING (PICTURE) L2.DWG

DRAWN BY: AL

CHK'D BY: JS, BS, RS, SL

COPYRIGHT:

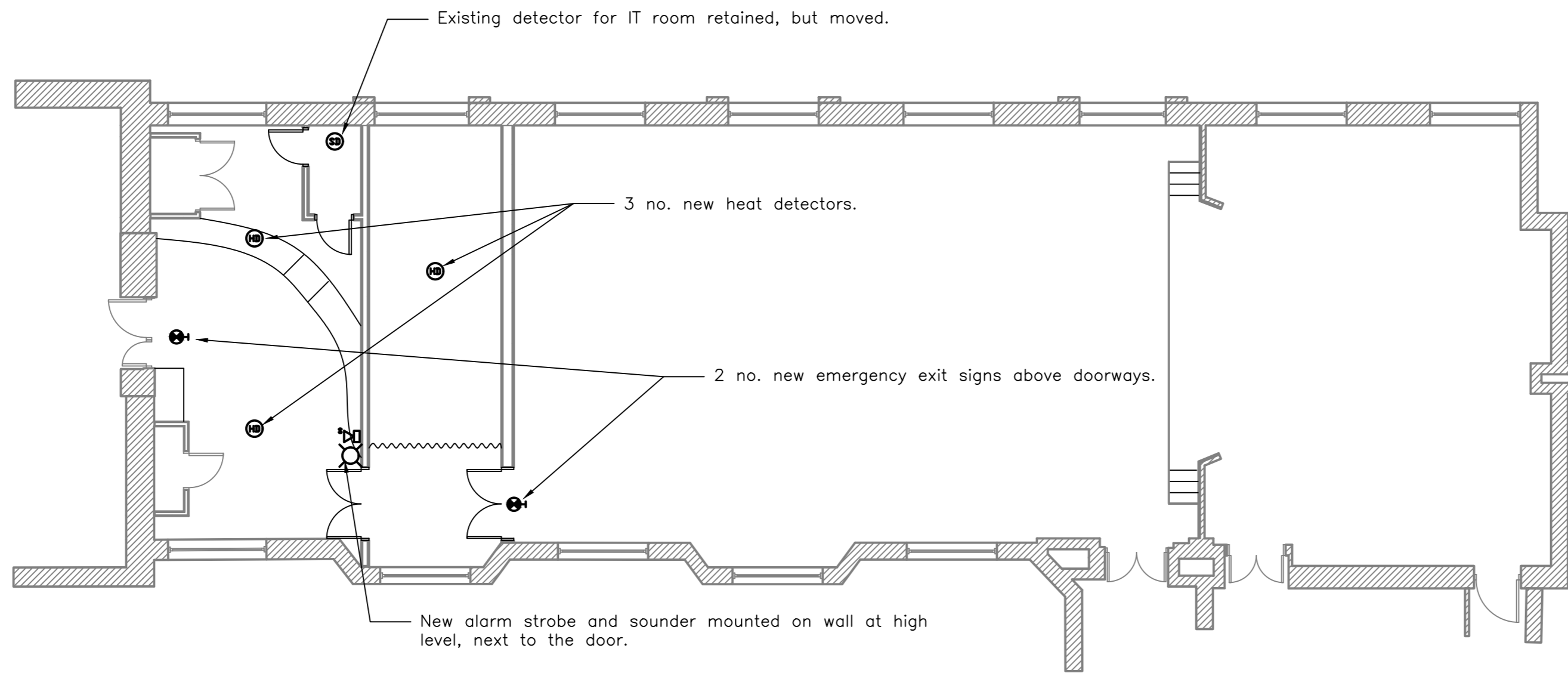
SHEET TITLE

NEW LIGHTING (PICTURE) L2

SHEET **E2** OF -



All existing heat detectors, sounders and strobes in the main hall space to be retained, including exit signage by the east door. (Not shown here)



Open questions:

- Foyer/airlock emergency lighting ideally integrated with the GDS Arcsystem install, rather than separate luminaires?
- Potentially require an extra exit sign within the airlock?
- If emergency exit signage within the hall must be of the maintained type, include an usher 'override' switch located at the usher seat on L2M, usable only when staffed?

UCH REDEV 202X
IMPERIAL COLLEGE UNION

OWNER

ICU CHUG

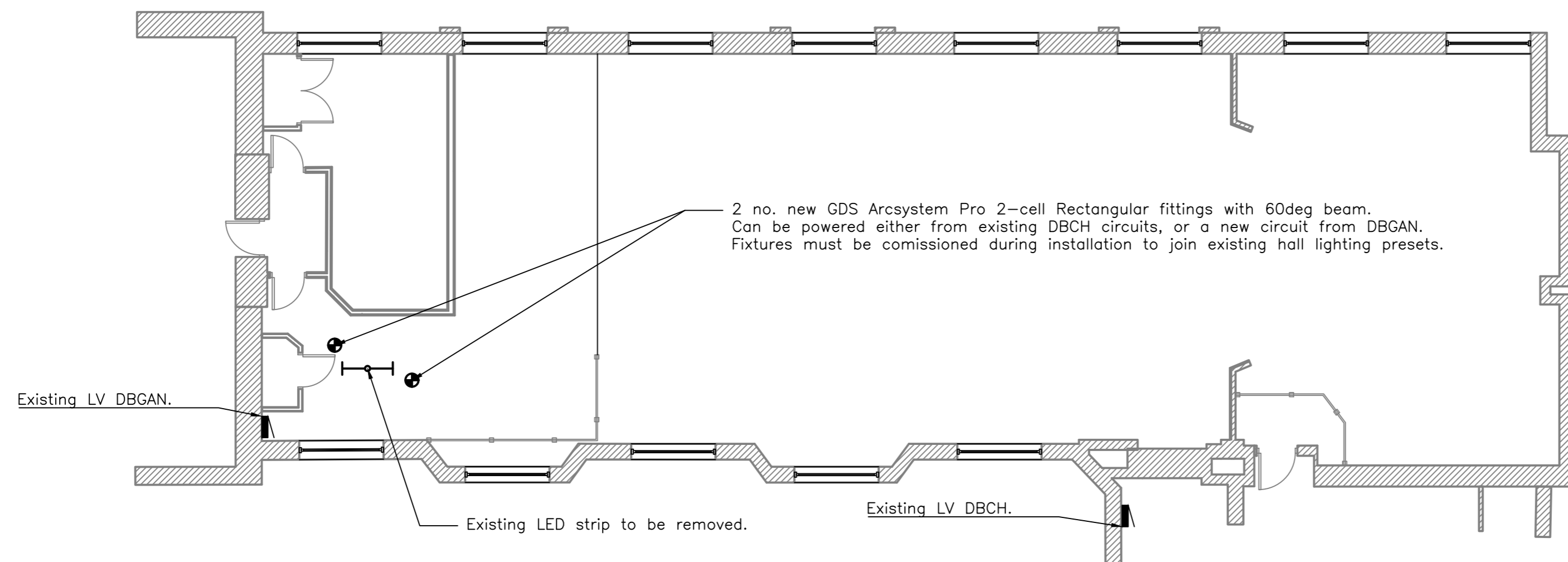
MARK	DATE	DESCRIPTION

PROJECT NO: UCH20AL
 CAD DWG FILE: E3 NEW EMERGENCY LX AND FIRE L2.DWG
 DRAWN BY: AL
 CHK'D BY: JS, BS, RS, SL
 COPYRIGHT:

SHEET TITLE
 NEW EMERGENCY LX AND
 FIRE L2



Existing luminaires to remain unchanged except where explicitly noted.



Open questions:

- A third Arcsystem 4-cell pro round may be required on the grand circle due to the existing fittings lacking sufficient beam width at the reduced throw length.
- Removing the LED strip necessitates discussion around emergency lighting in the gantry area. Maybe follow the main UCH style (recessed fitting in cable tray with backup battery)?
- Should the gantry desk 'blue' be relocated further east?

UCH REDEV 202X
IMPERIAL COLLEGE UNION

OWNER

ICU CHUG

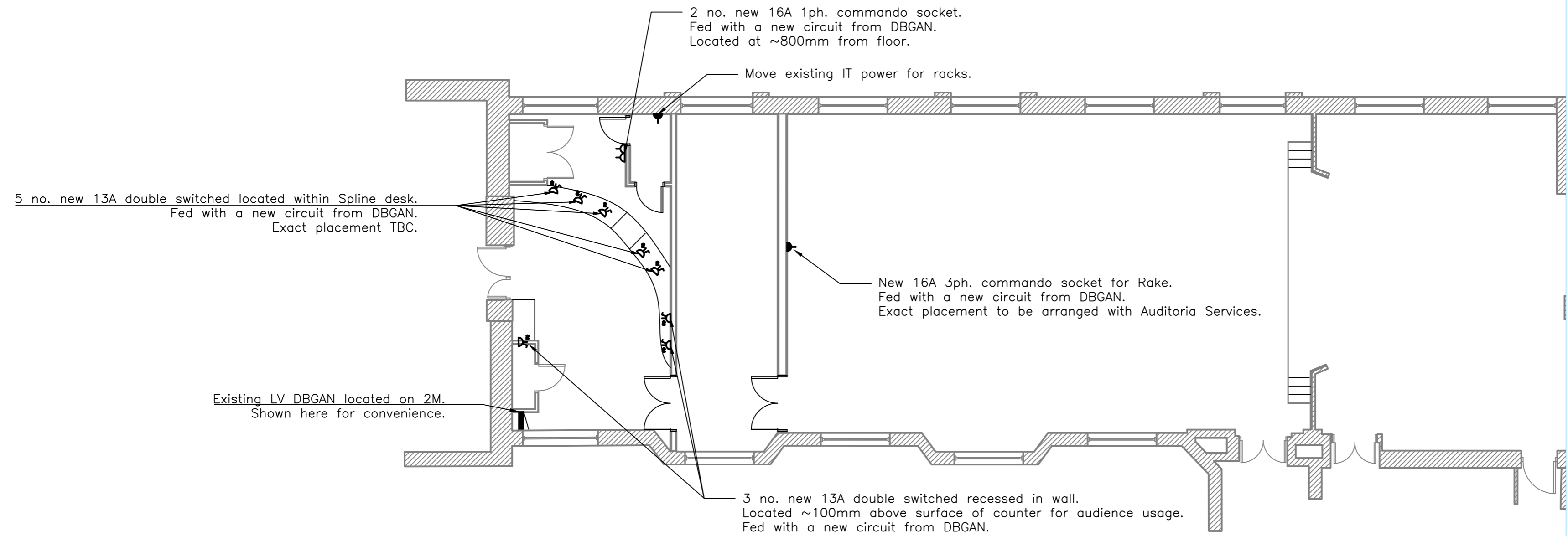
MARK	DATE	DESCRIPTION

PROJECT NO:	UCH20AL
CAD DWG FILE:	E4 NEW LIGHTING (NON EMERGENCY) L2M.DWG
DRAWN BY:	AL
CHK'D BY:	JS, BS, RS, SL
COPYRIGHT:	

SHEET TITLE
NEW LIGHTING (NON EMERGENCY) L2M



All existing sockets outside of the IT room to be retained.



UCH REDEV 202X
IMPERIAL COLLEGE UNION

OWNER

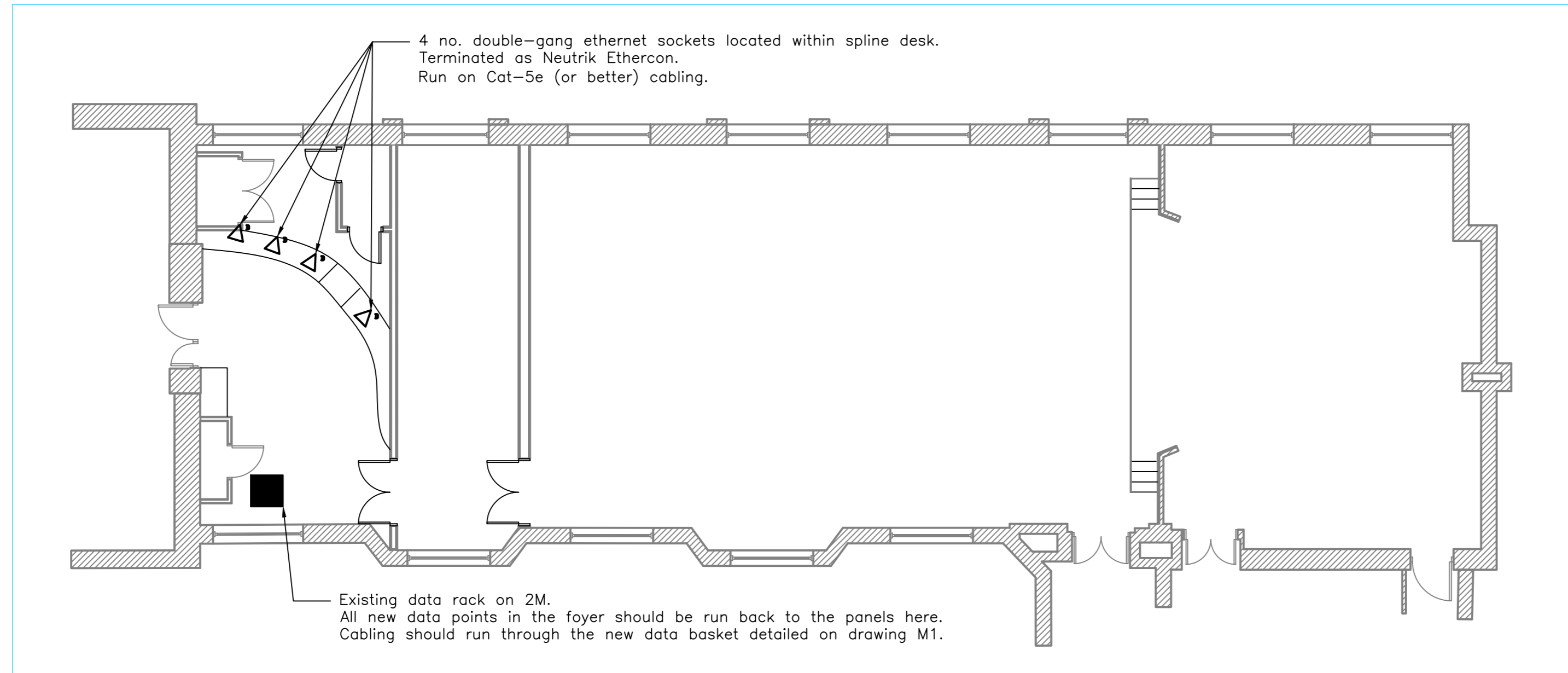
ICU CHUG

MARK	DATE	DESCRIPTION
------	------	-------------

PROJECT NO: UCH20AL
 CAD DWG FILE: E5 NEW SOCKETS L2.DWG
 DRAWN BY: AL
 CHK'D BY: JS, SL
 COPYRIGHT:

SHEET TITLE

NEW SOCKETS L2



UCH REDEV 202X
IMPERIAL COLLEGE UNION

OWNER

ICU CHUG

MARK	DATE	DESCRIPTION

PROJECT NO: UCH20AL
CAD DWG FILE: E6 NEW DATA L2.DWG
DRAWN BY: AL
CHK'D BY: JS, BS, RS, SL
COPYRIGHT:

SHEET TITLE
NEW DATA L2