

The Sports Hub – Amended information

1) Council paper, updated seconders list post CSPB

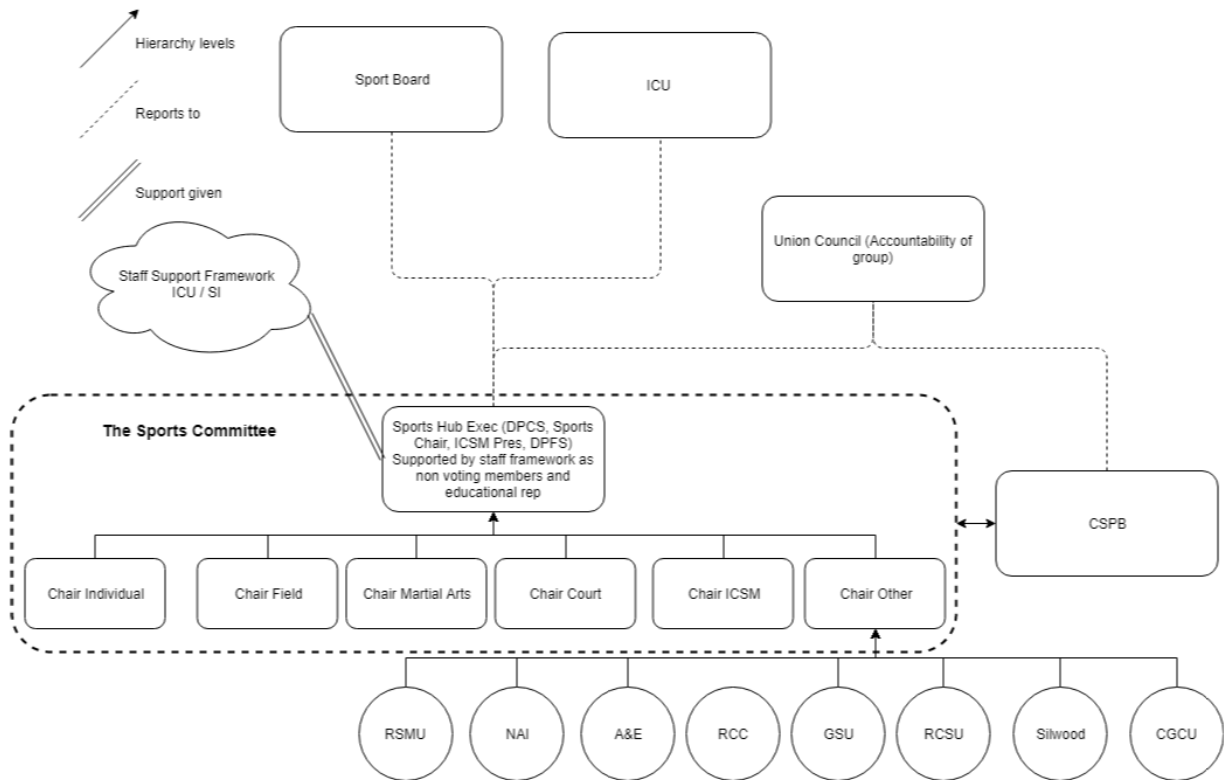
Proposer: James Medler – DPCS

Seconders:

- Robert Tomkies – President
- Becky Neil – DPW
- Claudia Caravello – DPFS
- Alejandro Luy – DPE
- Thomas Fernandez Debets – Sports Sector Chair
- Krystal Law – Sports Sector Treasurer
- John Townsend – Sports Sector VC Field
- Ross Unwin – Sports Sector VC Court
- Michael McGill – RCSU President
- Sully Mughal – RCSU Treasurer
- Thomas Pleece – Recreation Sector Chair
- Chimdi Igwe – Culture Sector Chair
- Anthony Onwuli – RSMU VPCS
- Dan Faehndrich – ICSMSU President
- Tom Willis – ICSMSU Clubs and Socs
- Muntaha Naeem – ICSMSU MG Treasurer
- Chris Buckingham – ICSMSU VC Volunteering + Academics
- Andrew Hill – CGCU President
- Owen Heaney – CGCU Clubs + Socs Officer
- Joseph O’Connell Danes – A&E Chair
- Daniel Wigh – KNE Chair

This paper requires a Bye-Law change to create a new subcommittee of Council and update other areas (to be verbally presented). This proposal has been discussed and agreed by all present at CSPB on 15 January 2019.

2) Page 8 – proposed solution, figure 3.1 (removed “money related” from ICU box)



3) Page 13 – pricing structure, 4.3, price evidence, points 4 and 5 (wording changes):

4. Actual spent on core sport hub items 17/18: Amount of money in clubs bank statement spent on core items (socials / fines / trips / tours have all been removed). Green highlighted cells here show that the amount spent by the club is less than the estimated cost in the sports hub model.

5. Sports Hub Estimate Cost for core items: Amount generated by the model to fund the sport inclusive of all shown in figure 4.1 assuming no missed trainings or matches. The total number (£367,336) should be viewed as most important here, with it being more than total actual 17/18 spent (£295,277).

4) Page 14 – pricing structure, figure 4.2 (change in heading 6)

Club name	Old membership income	Overall Predicted Cost (1718)		Actual spent on core sport hub items 1718	Approx contribution from sports hub to clubs	Club contribution + individuals membership
			Grant 1718			
ICSMSU Badminton	£3,840	£33,160	£3,407	£9,377	£10,394	£4,530
ICSMSU Cricket	£50	£6,293	£955	£2,500	£5,114	£1,185
ICSMSU Football	£3,645	£15,683	£3,219	£14,200	£12,450	£6,930
ICSMSU Hockey Men's	£4,340	£23,662	£4,092	£10,500	£23,443	£6,260
ICSMSU Lacrosse	£3,480	£46,262	£7,595	£19,000	£25,255	£8,740
ICSMSU Netball	£5,100	£24,254	£3,101	£15,000	£22,972	£7,050
ICSMSU Rugby	£3,570	£35,359	£5,067	£16,000	£7,368	£4,560
ICSMSU Squash	£450	£5,812	£328	£1,065	£4,048	£1,350
ICSMSU Hockey Women's	£2,535	£24,500	£3,484	£8,500	£13,227	£4,770
RSM Netball	£275	£2,510	£284	£1,400	£3,519	£930
SPC Netball	£3,780	£16,073	£3,184	£14,500	£15,364	£5,790
SPC Volleyball	£930	£27,194	£6,169	£18,000	£18,249	£5,415
SPC Basketball	£4,770	£30,969	£8,021	£20,500	£24,870	£7,280
SPC Dodgeball	£875	£6,720	£1,159	£4,000	£6,498	£2,050
SPC Handball	£1,645	£17,940	£2,814	£5,800	£4,419	£2,160
SPI Squash	£2,898	£14,153	£3,112	£11,500	£27,854	£5,220
SPC Swim/Waterpolo	£10,030	£62,200	£10,505	£21,500	£20,494	£6,540
SPF Hockey	£7,475	£60,977	£11,662	£34,000	£28,285	£11,450
SPF Rugby	£2,320	£48,052	£9,892	£18,200	£13,269	£5,820
SPF Rugby Women's	£1,430	£9,274	£1,978	£2,500	£7,093	£2,310
SPF American Football	£2,560	£17,083	£2,735	£10,250	£14,710	£3,960
SPF Baseball	£400	£5,266	£1,023	£1,500	£3,228	£980
SPF Cricket	£980	£15,740	£2,219	£5,000	£11,795	£3,090
SPF Football	£8,040	£77,894	£10,535	£23,985	£18,970	£12,645
SPF Ultimate	£2,272	£18,510	£2,739	£6,500	£24,450	£8,880
Total	£77,690	£645,539	£109,279	£295,277	£367,336	£129,895