

## RSMU Constitution Changes and Amendments

Proposer: Marta Wolinska, RSMU President

Secunder: Samuel Casement, RSMU Honorary Secretary

### Union Notes:

1. That Constituent Unions have constitutions, amendments to which must be ratified by Union Council
2. That the RSMU's Executive and General Committees have both voted in favour of amending the RSMU's Constitution to: add an outreach officer, rename Academic Liaison Officer to Vice-President (Education), rename Student Welfare Officer to Vice-President (Welfare) and add a new position: Welfare Events Coordinator. The two Vice-Presidents would form part of the Executive Committee.
3. That the proposed amendments and changes are outlined in appendices 1-3

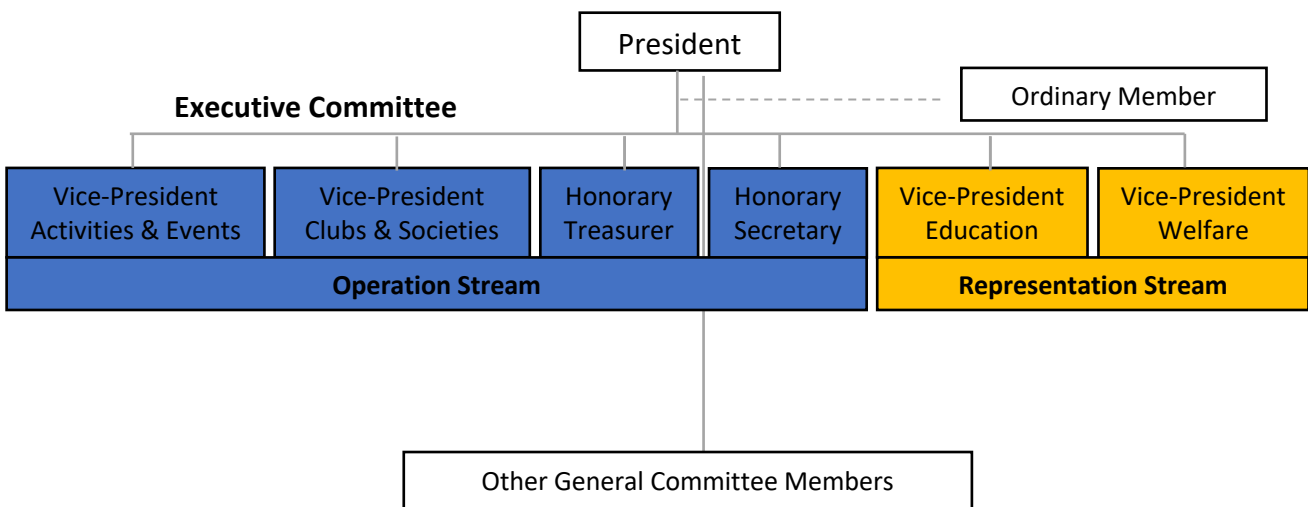
### Union Believes:

1. That the addition on an additional welfare officer will improve the execution of welfare responsibilities to the benefit of the members of the RSMU and will encourage more members to apply for the role as it will be better framed within the committee,
2. The addition of an outreach officer will have a positive impact on student engagement with their subject,
3. The increase in status of the representation officer will increase interest in the roles and will be a better representation of the work it entails.

### Union Resolves:

1. To ratify the constitutional change detailed above,
2. To advertise and include the new positions during the upcoming elections.

## Appendix 0 – Flowchart of new committee structure



## Appendix 1 – changes regarding welfare representation

Currently the RSMU constitution states:

### 12. Student Welfare Officer

The Student Welfare Officer shall:

- i. Co-chair the Academic and Welfare Committee with the department senior tutors,
- ii. Act as a point of contact for students of the Departments in cases where welfare assistance is required,
- iii. Promote the welfare services provided by Imperial College, the ICU and the Faculty Union of Engineering,
- iv. Offer assistance and support by signposting students to relevant college and union services,
- v. Work with the Departmental Representatives to maintain the Buddies System throughout the year.
- vi. Liaise with the Wellbeing Representatives of the Departments to facilitate better relations between the students and staff.

The role of Student Welfare Officer will now be named Vice-President Welfare and will be an honorary member of the executive committee.

### 12. Vice-President Welfare

*The Vice-President Welfare shall:*

- i. Co-chair the Academic and Welfare Committee with the department senior tutors,*
- ii. Attend Union Council meetings as an RSMU voting member and vote on issues raised at Community and Welfare Board meetings,*
- iii. Attend Departmental SSCs and FoE Wellbeing SSC,*
- iv. Communicate policies and updates between the Union, College and Departments*
- v. Act as a point of contact for students of the Departments in cases where welfare assistance is required,*
- vi. Offer assistance and support by signposting students to relevant college and union services,*
- vii. Oversee the activities of the Student Welfare Officer*

### 15. Welfare Events Coordinator

*The Welfare Events Coordinator shall:*

- I. Act as a point of contact for students of the Departments in cases where welfare assistance is required,*
- II. organise and run inclusive events to promote welfare and wellbeing*
- III. run campaigns to improve student welfare (or help students who may want to run a campaign)*
- IV. Promote the welfare services provided by Imperial College, the ICU and the Faculty Union of Engineering,*
- V. Offer assistance and support by signposting students to relevant college and union services,*
- VI. Work with the Departmental Representatives to maintain the Buddies System throughout the year.*
- VII. Liaise with Vice-President (Welfare) and Vice-President (Activities&Events) regarding new initiatives/events.*

## Appendix 2 – Changes to Academic Liaison Officer

Currently the RSMU Constitution States:

### 8. Academic Liaison Officer

The Academic Liaison Officer shall:

- i. Co-ordinate with the Department Representatives of the Departments to facilitate better relations between the students and staff,
- ii. Co-ordinate the staff-student consultation with the department senior tutors,
- iii. Co-chair the Academic and Welfare Committee (as outlined in Regulation Three),
- iv. Encourage students to complete surveys such as the NSS and SOLE with the aim of improving student involvement in the running of their degree courses,
- v. Work to resolve any issues or grievances experienced by students in relation to their course and encourage use of the academic support network of the ICU.

The Academic Liaison Officer will now be named Vice-President (Education) and will be a member of the Executive Committee.

### 8. Vice- President Education

*The Vice-President Education shall:*

- I. Coordinate with and support the Departmental Representatives of the Departments to create cohesive student representation teams and facilitate staff-student communication*
- II. Co-chair the Academic and Welfare Committee (as outlined in Regulation Three),*
- III. Work actively with Vice-President (Welfare), understanding and advertising the complimentary differences between the academic and welfare representation networks, using the Academic and Welfare Committee (Regulation 3) as a medium for communication*
- IV. Communicate and consult with DUGS, senior tutors and other key members of staff as necessary*
- V. Attend Union Council meetings as an RSMU voting member and vote on issues raised at Education and Representation Board meetings*
- VI. Attend departmental and faculty level meetings, primarily Faculty Teaching Committee, Faculty Education Committee and Faculty SSC. Ensure the best interests of RSMU students are communicated to staff at these meetings*
- VII. Promote student experience surveys (SOLE, NSS etc.) with the aim of improving student involvement in the running of their degree course, and relevant schemes/initiatives (StudentShapers, SACAs etc.) to RSMU students, either directly or by coordination with ARN teams*
- VIII. Work to resolve any issues or grievances experienced by students in relation to their course and encourage use of the academic support network of the ICU.*

## Appendix 3– Addition of *Outreach Officer to Regulation 1*

### 16. *The Outreach Officer*

*The Outreach Officer shall*

- I. *Liaise with the departments to promote student involvement in departmental outreach activities*
- II. *Aim to organise an outreach event to promote the earth and materials sciences with an audience of younger students.*

## Appendix 4– Changes to: 7. *Executive Committee and Regulation Three- Composition of RSMU Committees and*

### 7. **Executive Committee**

1. The Executive Committee shall be responsible for the general management of the Union and may prescribe policy subject to the direction of the Committee.
2. The President shall convene the Executive Committee at least every two weeks during term time.
3. An Emergency Meeting of the Executive Committee may be called by:
  1. The resolution of the Committee,
  2. The President, or
  3. Two other members of the Executive Committee.
4. Emergency Action:
  1. The President may act on behalf of the Executive Committee, provided that these actions are reported to and approved by the Executive Committee at its next meeting.
  2. The Executive Committee may act on behalf of the Committee in matters of urgency, provided that these actions are reported to and approved by the Committee at its next meeting.

### **Addition after point 1**

*The Executive Committee shall be formed of two subcommittees: the operations and representation committees.*

### **Changes to Regulation 3**

#### **B. The Executive Committee**

1. The powers and responsibilities of the Executive Committee are set out in the Constitution.
  2. The Executive Committee shall meet as set out in the Constitution.
  3. The Executive Committee shall consist of the:
    - i. President,
    - ii. Vice-President Activities & Events
    - iii. Vice-President Clubs & Societies,
    - iv. Honorary Secretary,
    - v. Honorary Junior Treasurer,
- Permanent Observer**
- vi. RSMU Ordinary Member
4. Each member is of equal status to every other member. No member is the representative of any group within the RSMU.
  5. The Executive Committee shall be chaired by the President or his or her nominee.

### **Change to Point 3**

*The Executive Committee shall consist of the*

- I. President*
- II. Vice-President Activities & Events*
- III. Vice-President Clubs & Societies*
- IV. Vice-President Education*
- V. Vice-President Welfare*
- VI. Honorary Secretary,*
- VII. Honorary Junior Treasurer*

*Permanent Observer*

*VI. Ordinary Member*

### **Addition of Point 6**

*The Executive Committee will divide to two parts: Operations and Representation. The President is part of both. The President can choose to call on either or both committees depending on the topic, however all decisions regarding the RSMU will be voted on by all members of the Executive Committee.*

- I. The Operations Stream shall be formed of*
  - a. The President*
  - b. Vice-President Activities & Events*
  - c. Vice-President Clubs & Societies*
  - d. Honorary Secretary,*
  - e. Honorary Junior Treasurer*
- II. The Representation Stream shall be formed of*
  - a. The President*
  - b. Vice-President Education*
  - c. Vice-President Welfare.*